

The TCWC depends almost entirely upon donations from community members in order to continue with our educational events, advocacy, and programs. Without your support we don't exist, and our fragile ecosystem loses its home-grown, independent advocates, and then...you don't even want to think about what happens then. Or maybe you do?

Please send your contribution today and become a Friend of the Watershed. Thank you for your support!!

___\$15 ___\$25 ___\$50 ___\$100 _____other

Please make your check payable to Topanga Creek Watershed Committee and mail to:

TCWC
PO Box 959
Topanga, CA 90290

Please join us in protecting all of the precious life of our beloved canyon from ever-pressing threats (development, toxic chemicals, erosion, invasive pests, ignorance, carelessness....)

For more information please visit www.TopangaCreekWatershedCommittee.com.
To find what you can do to help, and get information about upcoming meetings and events, please contact us at topanga.tcwd@gmail.com or **310 455 4156**.

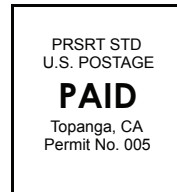
Board Members:

Ben Allanoff, Chair
Rabyn Blake
Gail McTune
Bill Bowling
RC Brody

TOPANGA CREEK WATERSHED COMMITTEE

PO Box 959
Topanga, CA 90290

POSTAL PATRON
TOPANGA, CA 90290



The Cricket



News from the Topanga Creek Watershed Committee

WHY POISON?

Amid ongoing concern over the use of herbicides in our watershed, we recently received confirmation from the local non-profit group Mountains Restoration Trust (MRT) that in 2010, under their aegis of State Parks, they used the herbicides imazapyr and triclopyr to kill invasive weeds (Arundo and Euphorbia) in Lower Topanga's Rodeo Grounds. Despite these treatments, at this writing the restoration area is completely covered, once again, in Euphorbia. Asked about plans for future spraying, the MRT responded that they have no specific plans, but they reserve the right to use herbicides as they see fit.

Over the past decade citizen mobilization against the use of Roundup (glyphosate) in Lower Topanga resulted in the formation of citizen volunteer Arundo-chopping teams, intended to demonstrate effectiveness of non-chemical methods of weed control. Unfortunately the project was halted prematurely when much of the area was bulldozed for early stage lagoon restoration.

Do you want herbicides to continue to be used in our watershed? Shall we ask the organizations who favor herbicides and use them in our area - State Parks, the Santa Monica Mountains Conservancy, the Resource Conservation District of the Santa Monica Mountains, and the Mountain Restorations Trust - to pledge to forego herbicides and embrace non-toxic methods instead? Let us hear from you!



OUR NATIVE GARDEN

The Native Garden at the Topanga Community Club is a once-barren slope now planted with many of the beautiful, fragrant species that occur naturally in the Santa Monica Mountains. The purpose of the garden is to beautify the heart of our community, and to demonstrate and encourage an eco-friendly way of landscaping among Topangans and TCC visitors.

The native garden at the Topanga Community House was created entirely by volunteers and donations - big thanks to all who have contributed! If you have not seen it lately, drop by soon and have a look. The garden is located downslope from the TCC driveway, between the ballfield and the Community House.

WHY ARE NATIVE PLANTS SO MUCH BETTER THAN LAWNS AND EXOTICS?

- Natives do not require pesticides, herbicides, or fertilizers, all of which inevitably migrate off-site, into ground water, creeks, and the ocean, where they harm microbial, plant, and animal life;
- Natives require minimal supplemental water, which saves money and helps the environment;
- Natives do not require mowing or blowing, and so eliminate a significant source of air and noise pollution;
- Native plants attract native insects and wildlife;
- Natives help control erosion and prevent soil compaction;
- Native gardens require significantly less labor and money to maintain compared with other landscapes, especially lawns.